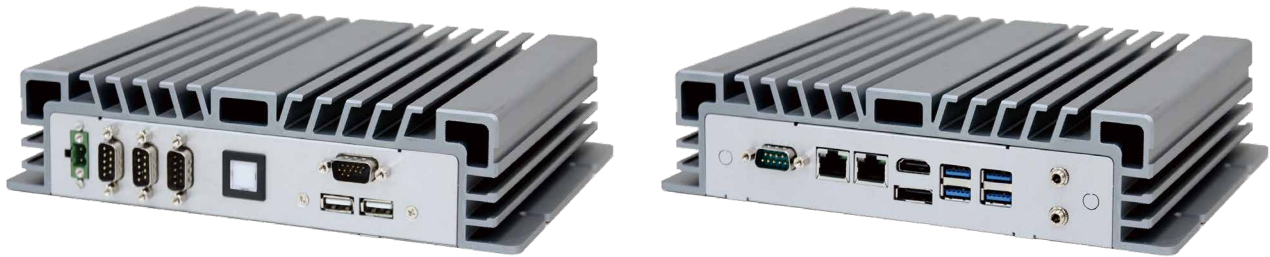


Fanless Compact Embedded Box PC with 7th generation Intel® Core™ i5/i3 KabyLake-U processor



Features

- 7th Generation Intel® Core™ i5® Dual-Core up to 3.1 GHz
- 2/4 Gigabit Ethernet Ports
- 6 USB, 4 COM, 8bits GPIO
- 1 Mini PCIe (for WLAN Module)
2 M.2 Expansion Slot
- 9-36 V DC Power Input

Applications

- Embedded Digital Signage Control Systems
- Factory Automation Applications
- Image Processing
(e.g. Medical 2D and 3D imaging)
- Gaming and Entertainment Industries
- Network Communications

→ Packing List

Description
1 x BPC-3072
1 x Driver CD
1 x Power Adapter
1 x Power Cord

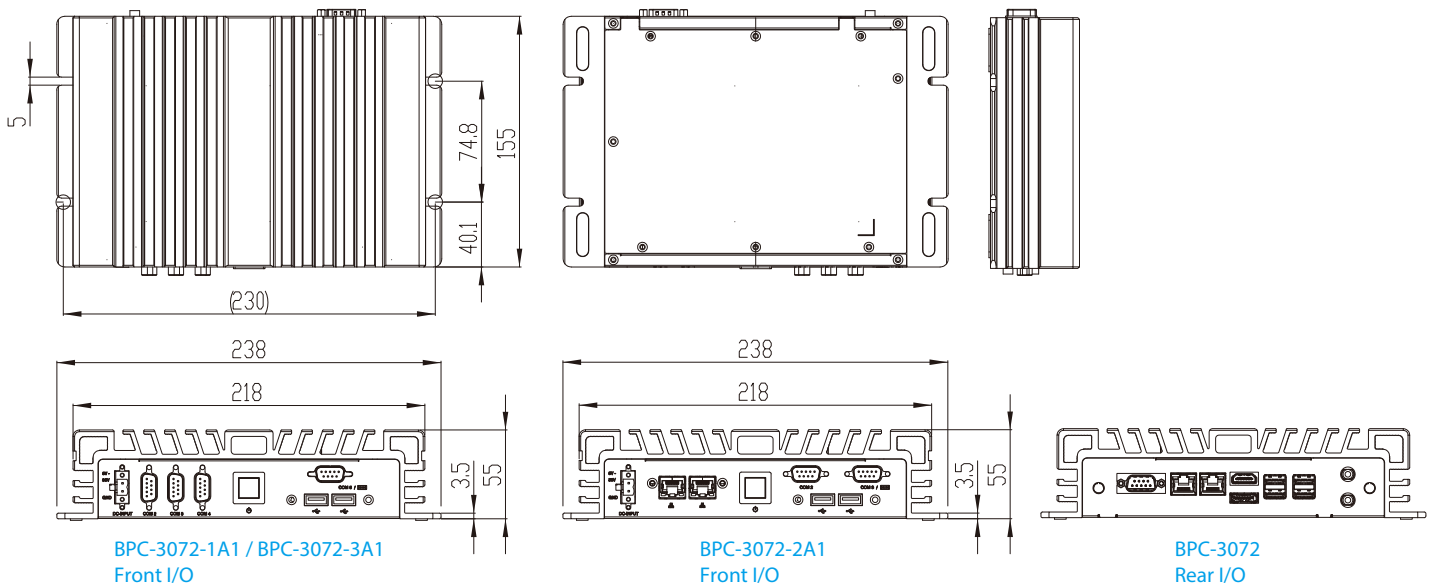
→ Optional Items

Part No.	Description
AWD-3G002	3G (HSPA+) Module + 1 Antenna, Full-size
AWD-4G001	4G (LTE) Module + 2 Antennas, Full-size
AWD-WF001	Wi-Fi 802.11 bgn (1T1R) + 1 Antenna, Half-size
AWD-WF002	Wi-Fi 802.11 bgn/BT4.0 (1T1R) Module + 1 Antenna (Dual band), Half-size
AWD-WF003	Wi-Fi 802.11 abgn/ac/BT4.0 (2T2R) Module + 2 Antennas (Dual band), Half-size
AWD-WF004	wifi 802.11 b/g/n + BT4.0(1T1R) + 2 Antenna(dual band), M.2 2230 type
AWD-WF005	wifi 802.11 a/b/g/n/ac/BT4.0 (2T2R) + 2 Antenna(dual band), M.2 2230 type

→ Ordering Information

Part No.	Description
BPC-3072-1A1	Intel® Core® i5-7200U 3.1 GHz Dual core CPU, 2 DDR4, 2 GbE, 4 USB 3.0, 2 USB 2.0, 3 RS-232, 1 RS-232/422/485, 8bits GPIO, line out, mic in, 1 HDMI, 1DP, DC 9~36V, Phoenix Connector
BPC-3072-2A1	Intel® Core® i5-7200U 3.1 GHz Dual core CPU, 2 DDR4, 4 GbE, 4 USB 3.0, 2 USB 2.0, 1 RS-232, 1 RS-232/422/485, 8bits GPIO, line out, mic in, 1 HDMI, 1DP, DC 9~36V, Phoenix Connector
BPC-3072-3A1	Intel® Core® i3-7100U 2.4 GHz Dual core CPU, 2 DDR4, 2 GbE, 4 USB 3.0, 2 USB 2.0, 3 RS-232, 1 RS-232/422/485, 8bits GPIO, line out, mic in, 1 HDMI, 1DP, DC 9~36V, Phoenix Connector

→ Dimensions



→ Specifications

Model		BPC-3072-1A1	BPC-3072-2A1	BPC-3072-3A1
Processor System	CPU	Intel® Core™ i5-7200U		Intel® Core™ i3-7100U
	Frequency	Dual-Core 3.1 GHz		Dual-Core 2.4 GHz
	Cache	Intel® Smart Cache 3 MB		
	System Chipset	N/A		
Memory	BIOS	UEFI		
	Technology	DDR4 2133 MHz SDRAM		
	Max. Capacity	32 GB		
Display	Socket	2 260-pin SO-DIMM		
	Graphics Engine	Intel® HD Graphics 620		
	Display Port	1 HDMI, 1 DP		
	HDMI	HDMI2.0a, HDCP2.2, max resolution up to 4096 x 2160 @ 60Hz		
Front I/O Interface	DP	DP 1.2, max resolution up to 3840 x 2160@ 60Hz		
	USB	2 USB 2.0	2 USB 2.0	2 USB 2.0
	Serial Port	3 RS-232	1 RS-232, 1 RS-232(option)	3 RS-232
	Digital I/O	8bits GPIO (DB-15)	8bits GPIO (DB-15)	8bits GPIO (DB-15)
Rear I/O Interface	USB	4 USB 3.0	4 USB 3.0	4 USB 3.0
	Serial port	1 RS-232/422/485	1 RS-232/422/485	1 RS-232/422/485
Ethernet	Controller	2 GbE(Intel® i219V and Intel® i211AT)	4 GbE(Intel® i219V and Intel® i211AT)	2 GbE(Intel® i219V and Intel® i211AT)
Audio	Connectors	Line out, Mic in		
Expansion	Mini PCIe	1 full-size		
	SATA	1 2.5" HDD / SSD, SATA III (Max. data transfer rate 600 MB/s)		
Storage	M.2	2 M.2, 1 M.2 2280 B/M key, 1M.2 2230 A/E Key		
	Power Type	AT / ATX		
Power	Power Supply Voltage	9-36 V DC input (Phoenix Connector)		
	Power Consumption (Typical)	1.1 A @ 12 V (13.2 W)	1.20A @ 12V (14.4W)	1.1 A @ 12 V (13.2 W)
	Power Consumption (Max)	2.58 A @ 12 V (31 W)	5.08 @ 12V (61W)	2.58 A @ 12 V (31 W)
	Operational	-20~60° C (-4~140° F) w/ Extend Temp. RAM & Extend Temp. 2.5" SSD (Humidity: 60° C @ 80% RH Non-condensing)		
Environment	Non-Operational	-40~85° C (-40~185° F) (Humidity: 50° C @ 95% RH Non-condensing)		
	Vibration	5 Grms, IEC 60068-2-64, random, 5~500 Hz, 1 Oct/min., 1hr/axis, x, y, z 3 axes (w/ SSD only) 1 Grms, IEC 60068-2-64, random, 5~500 Hz, 1 Oct/min., 1hr/axis, x, y, z 3 axes (w/ 2.5" HDD)		
	Shock	50 G, IEC 60068-2-27, half sine, 11 ms duration (w/ SSD only) 20 G, IEC 60068-2-27, half sine, 11 ms duration (w/ 2.5" HDD)		
Certificate	Certification	TBD		
General	Dimensions (W x H x D)	238 x 55 x 155 mm (9.37" x 2.16" x 6.1")		
	Weight	1.77 kg (3.90 lb)	1.97 kg (4.34 lb)	1.77 kg (3.90 lb)
	Operating System	Windows10 IoT		